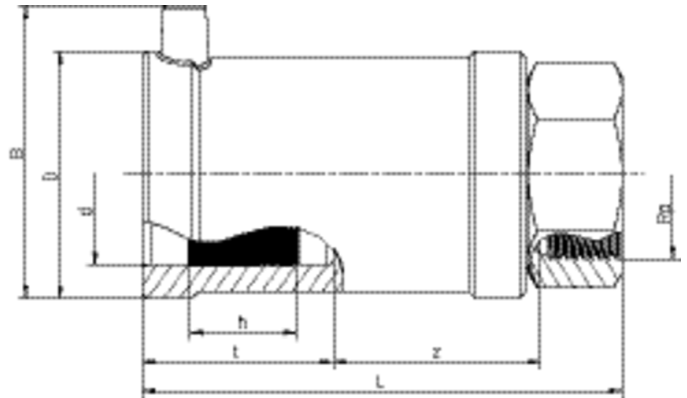


MUM

FRIALEN Safety Fittings

Transition Fittings HD-PE/Gunmetal with female thread



PE 100 SDR 11



Maximum working pressure 16 bar (water)

SKU	d	Rp	BX	PU	D	L	t	z	h	B	Weight kg
612595	32	1"	20	1080	47	112	42	49	24	61	0,360
612596	40	1 1/4"	20	800	58	121	46	53	30	70	0,520
612692	50	1 1/2"	15	600	70	136	53	60	30	80	0,650
612708	63	1 1/2"	10	300	84	141	53	61	35	94	1,230
612693	63	2"	10	400	84	141	53	61	35	94	1,050

Other thread sizes on request

FRIALEN safety fittings can be fused to pipes SDR11 – SDR 17.6. Minimum wall thickness $s_{min} \geq 3$ mm. Other SDR-stages on request. Please observe the marking directly at the product, which is mandatory. DVGW-Registration No. DV-7501AU2256

MUM**FRIALEN Safety Fittings****Transition Fittings HD-PE/Gunmetal with female thread****Areas of Application**

FRIALEN-Transition Fittings MUM are threaded joints as an adaptor from a metal pipe with external thread to a HD-PE pipe. Joint on the part of HD-PE by FRIALEN-Coupler.

Assembly Instructions

The threaded component must be held with a spanner to prevent it twisting in the HD-PE component. The fusion of the HD-PE side takes place by FRIALEN-fusing – leakproof and longitudinally strong.

The installation of the gunmetal and the HD-PE side has to be prepared according to the general installation instructions (see "Transition Fittings with threaded connection" in "Assembly Instructions" for "FRIALEN-Safety Fittings for house connections and distribution pipes up to d 225"). This involves removing the oxide skin and cleaning the pipe ends.

MUM**FRIALEN Safety Fittings**

Transition Fittings HD-PE/Gunmetal with female thread

Good reasons for using the FRIALEN-Transition Fittings MUM:

Compact construction

HD-PE side with exposed heating element for optimal heat transfer

Cold zones at the end to prevent the flow of molten material

No holding clamps required

Large insertion depth, extra wide fusion zones

Gunmetal end permanently anchored in the HD-PE and will not distort

Self sealing patented sealing geometry without elastomer seal

Additional barcode for tracing back the fitting (Traceability-Coding)